

S-BOX
CHAMELEON™



2-PORT MINI

3-PORT with or without USB

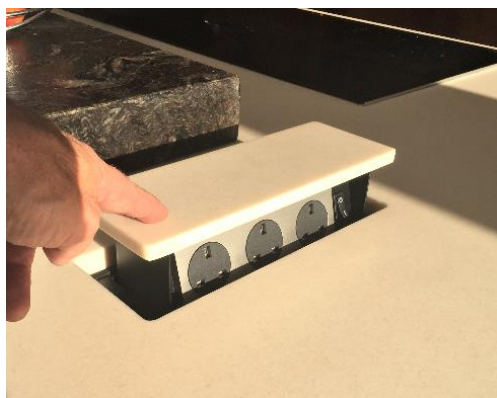
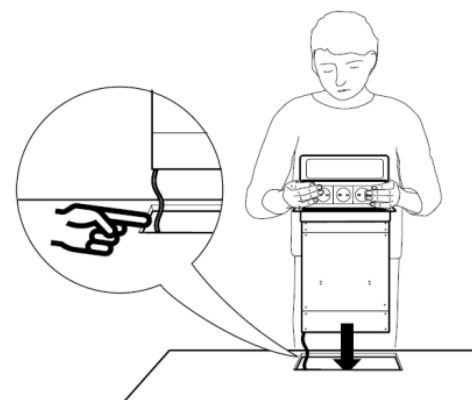
CUTTING INSTRUCTIONS AND INSTALLATION GUIDE



**WE RECOMMEND THAT ALL 'CUT-OUT' PROCESSES
AND/OR ANY 'CUSTOM TOP' FABRICATION SHOULD BE
DONE BY YOUR SPECIALIST WORKTOP PROVIDER**

The S-Box™ Chameleon Model is specifically designed for installation at exactly -20mm below surface - for an invisible and camouflaged location in the Counter.

This feature is unique and enables pop-up sockets to remain hidden from view until they are required!



This method involves:

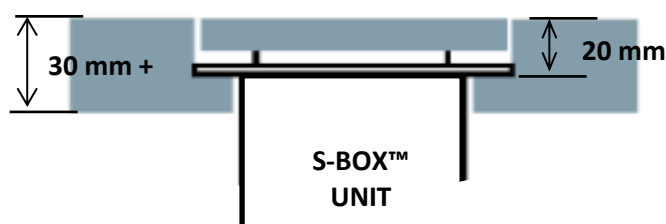
1. The installation of the main unit structure **at exactly 20mm** below the Counter-top on a rebate, so that the product can then be fully disguised in its location after the addition of its custom top – one that is duly flush with, and matching with, its surroundings. This is known as the **Chameleon** installation.
2. The creation of a Custom Top to place on the unit itself.

In worktop materials are of 30mm thickness and above, the installation is achieved by sitting the unit's collar on a true rebate cut within the material itself.

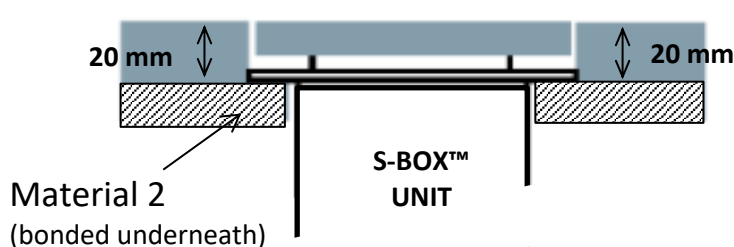
For materials of 20mm thickness, installation is achieved by sitting the unit's collar on a "false" rebate. This is created by using a second/slave material immediately below.

The thru-views below show these two typical installation methods

TRUE REBATE IN 30mm MATERIAL



FALSE REBATE IN 20mm MATERIAL



**** IF COUNTER MATERIAL IS ONLY 12mm THICKNESS PLEASE SEE PAGES 8 and 9 ****

ANY S-BOX™ THAT IS TO BE INSTALLED IN THE HIDDEN “CHAMELEON” MODE, NEEDS THE INVOLVEMENT OF THE WORKTOP FABRICATOR AND HIS CUTTING TOOLS . . .

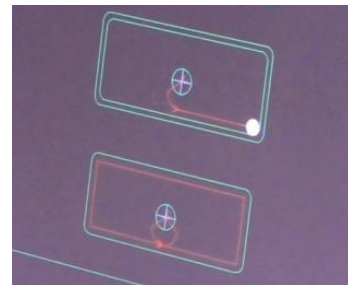


IN MATERIAL SUCH AS TIMBER, THIS CAN BE DONE BY HAND-TOOLS, BUT IN STONE MATERIAL (such as GRANITE/QUARTZ) AND IN MOST COMPOSITE MATERIALS, ALL PROCESSES ARE CARRIED OUT IN-FACTORY.

THIS IS THE SAME WAY THAT ANY STONE COUNTER IS PRE-CUT FOR THE SINK, THE TAPS, EXTRACTOR OR COOKER HOB.



THE CUTTING TOOLS (TYPICALLY CROSS-CUTTER and CNC ROUTER) ARE PROGRAMMED WITH THE DIMENSIONS REQUIRED.



**NB.
A ROUTER STARTS ITS CUTTING ROUTE FROM THE CENTRE POINT WHEN IT MACHINES OUT ANY HOLE.**

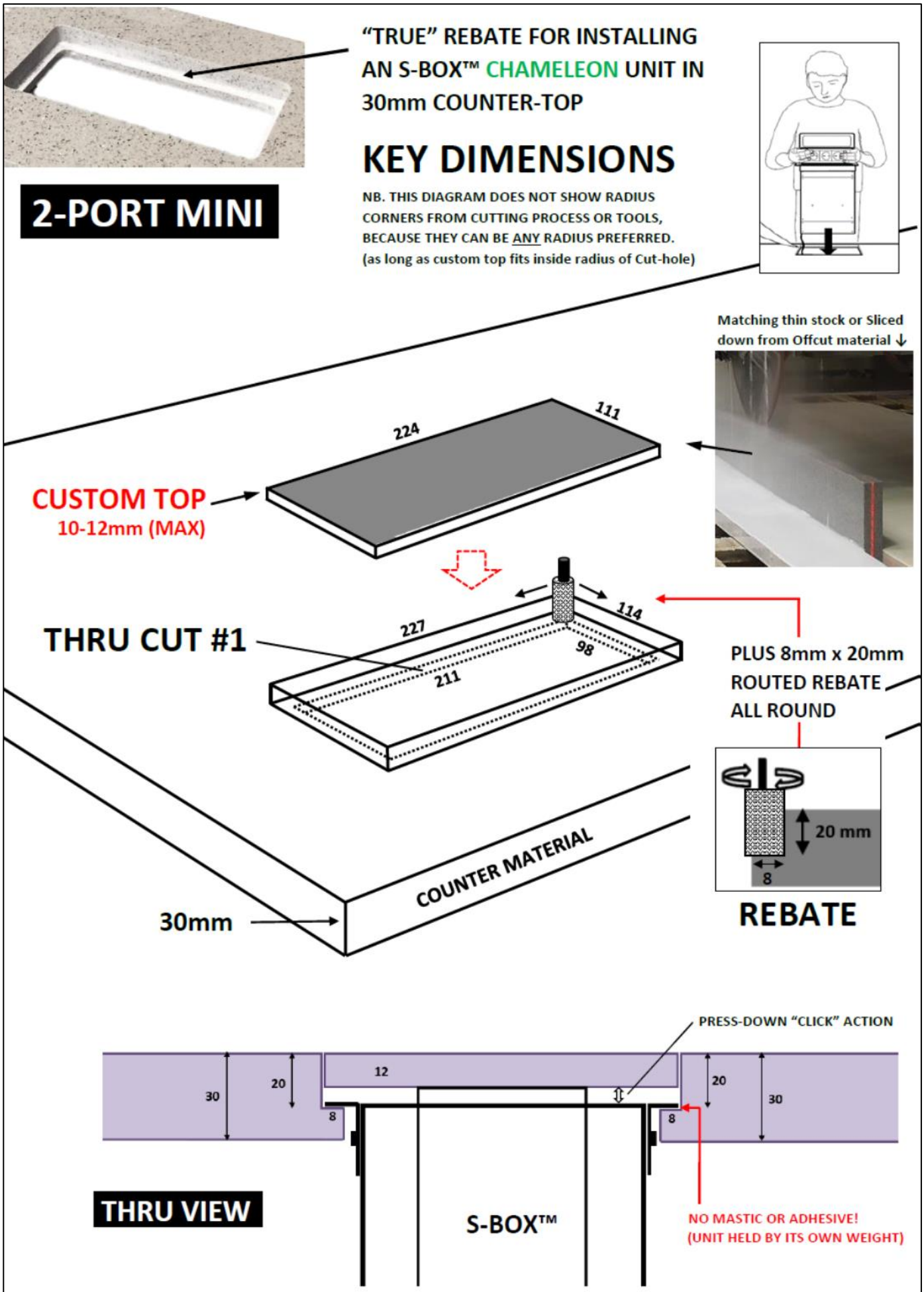


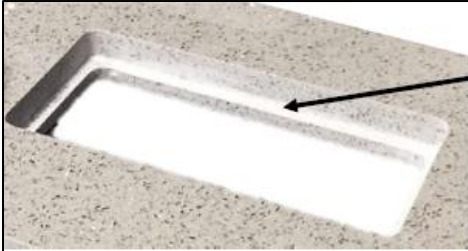
In 20mm material (or less) the hole will only be a full thru-cut one, with the rebate added later by using a second material underneath)

In the case of 30+mm material, machining will also include making the rebate for an S-Box™.



TO CREATE THE REBATE IN 30mm MATERIAL – THE ROUTER CARRIES OUT TWO PROCESSES:
 THE FIRST IS A FULL THRU-CUT HOLE. THE SECOND IS TO GRIND OUT AN EXTRA 8mm, AT 20mm DEPTH.
 THE CUSTOM TOP DIMENSIONS ARE 3mm SMALLER, TO PRODUCE A 1.5MM GAP TO ALL 4 SIDES.
 (see 'custom top' process on page 10)





"TRUE" REBATE FOR INSTALLING
AN S-BOX™ **CHAMELEON** UNIT IN
30mm COUNTER-TOP

3-PORT

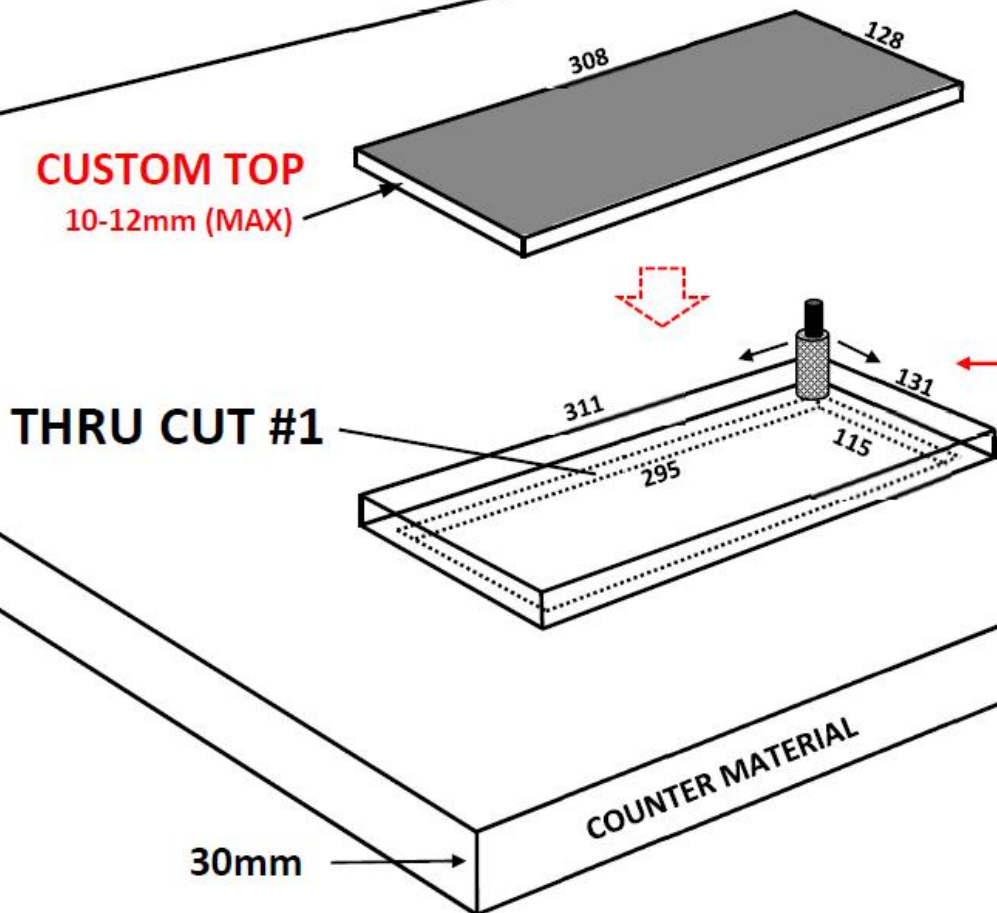
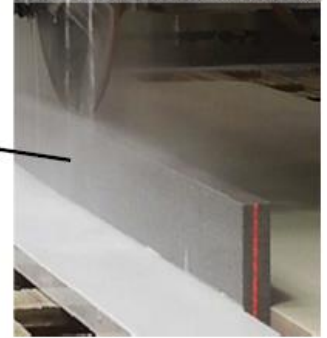
with or without USB

KEY DIMENSIONS

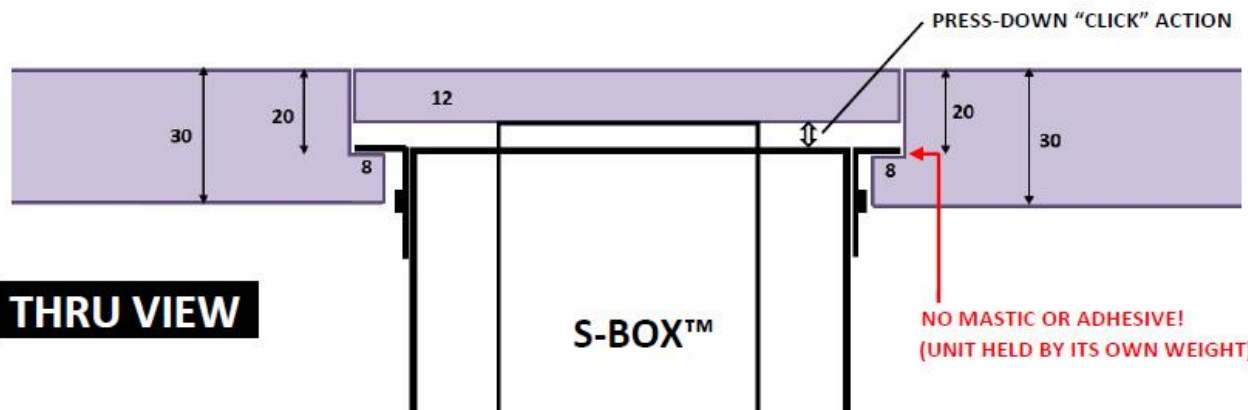
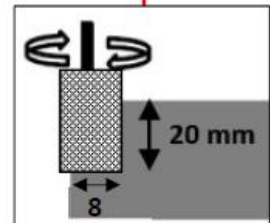
NB. THIS DIAGRAM DOES NOT SHOW RADIUS
CORNERS FROM CUTTING PROCESS OR TOOLS
BECAUSE THEY CAN BE ANY RADIUS PREFERRED.
(as long as custom top fits inside radius of Cut-hole)

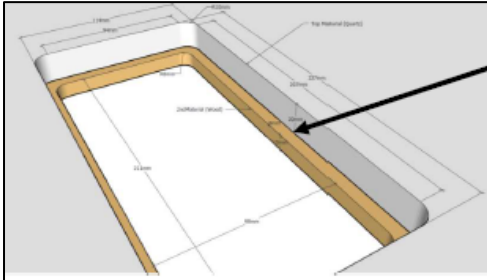


Matching thin stock or Sliced
down from Offcut material ↓

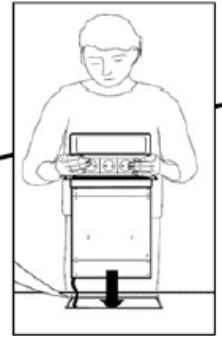


ROUTED EXTRA
8mm ALL ROUND

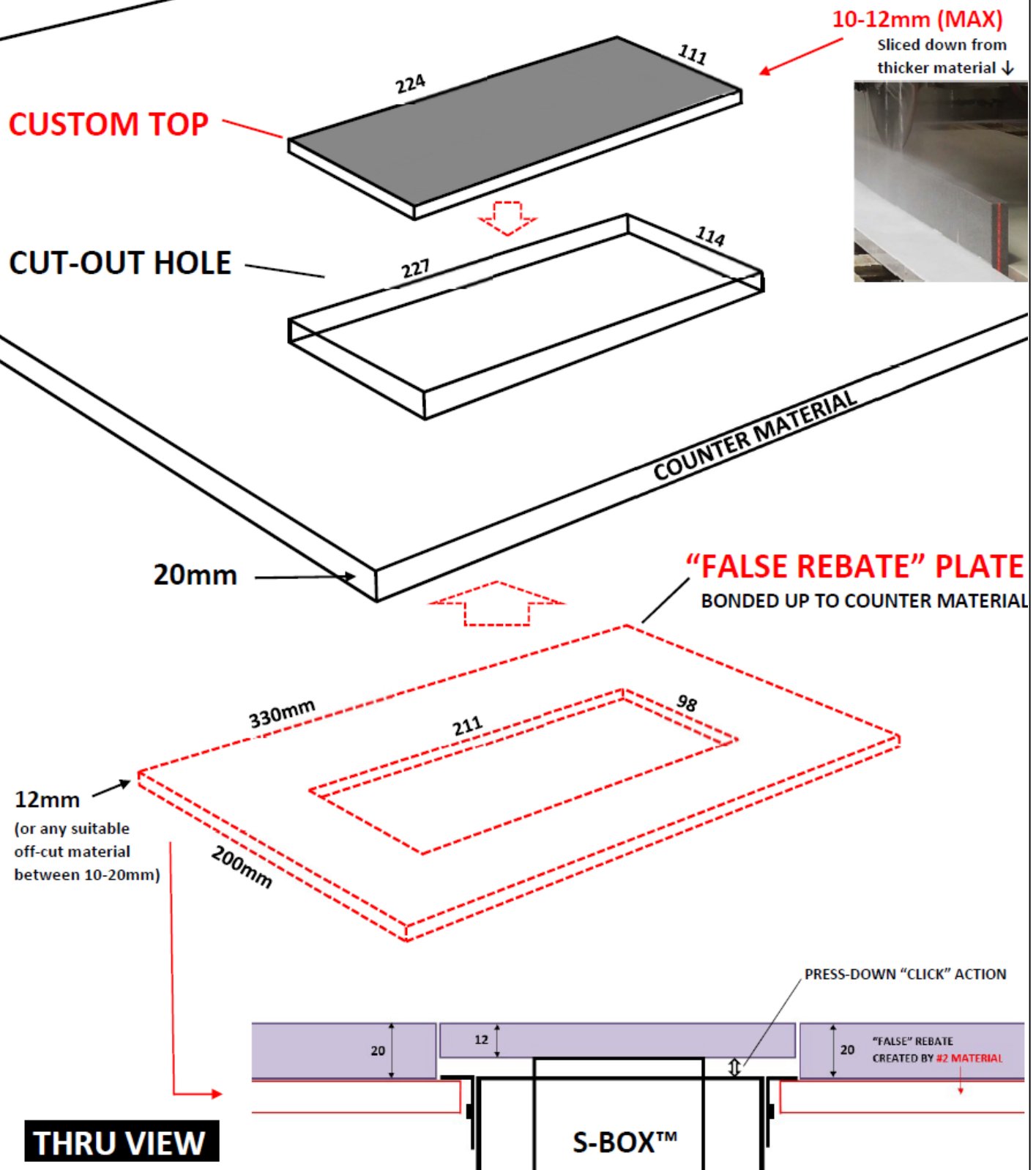




"FALSE REBATE" FOR INSTALLING AN S-BOX™ CHAMELEON UNIT IN 20mm QUARTZ COUNTER-TOP.



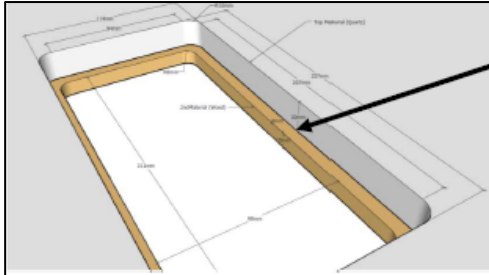
KEY DIMENSIONS



“FALSE REBATE” PLATE
BONDED UP TO COUNTER MATERIAL

"FALSE" REBATE
CREATED BY #2 MATERIAL

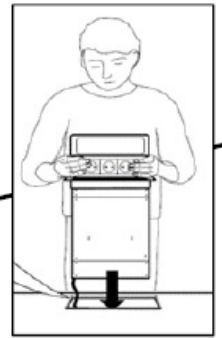
S-BOX™



**"FALSE REBATE" FOR INSTALLING
AN S-BOX™ CHAMELEON UNIT IN
20mm QUARTZ COUNTER-TOP**

KEY DIMENSIONS

NB. THIS DIAGRAM DOES NOT SHOW RADIUS
CORNERS FROM CUTTING PROCESS OR TOOLS,
BECAUSE THEY CAN BE ANY RADIUS PREFERRED.
(as long as custom top fits inside radius of Cut-hole)



3-PORT

with or without USB

10-12mm (MAX)

Sliced down from
thicker material ↓

CUSTOM TOP

CUT-OUT HOLE

COUNTER MATERIAL

20mm

**"FALSE REBATE" PLATE
BONDED UP TO COUNTER MATERIAL**

12mm

(or any suitable
off-cut material
between 10-20mm)

400mm

295

115

230mm

PRESS-DOWN "CLICK" ACTION

20

12

20

**"FALSE" REBATE
CREATED BY #2 MATERIAL**

THRU VIEW

S-BOX™

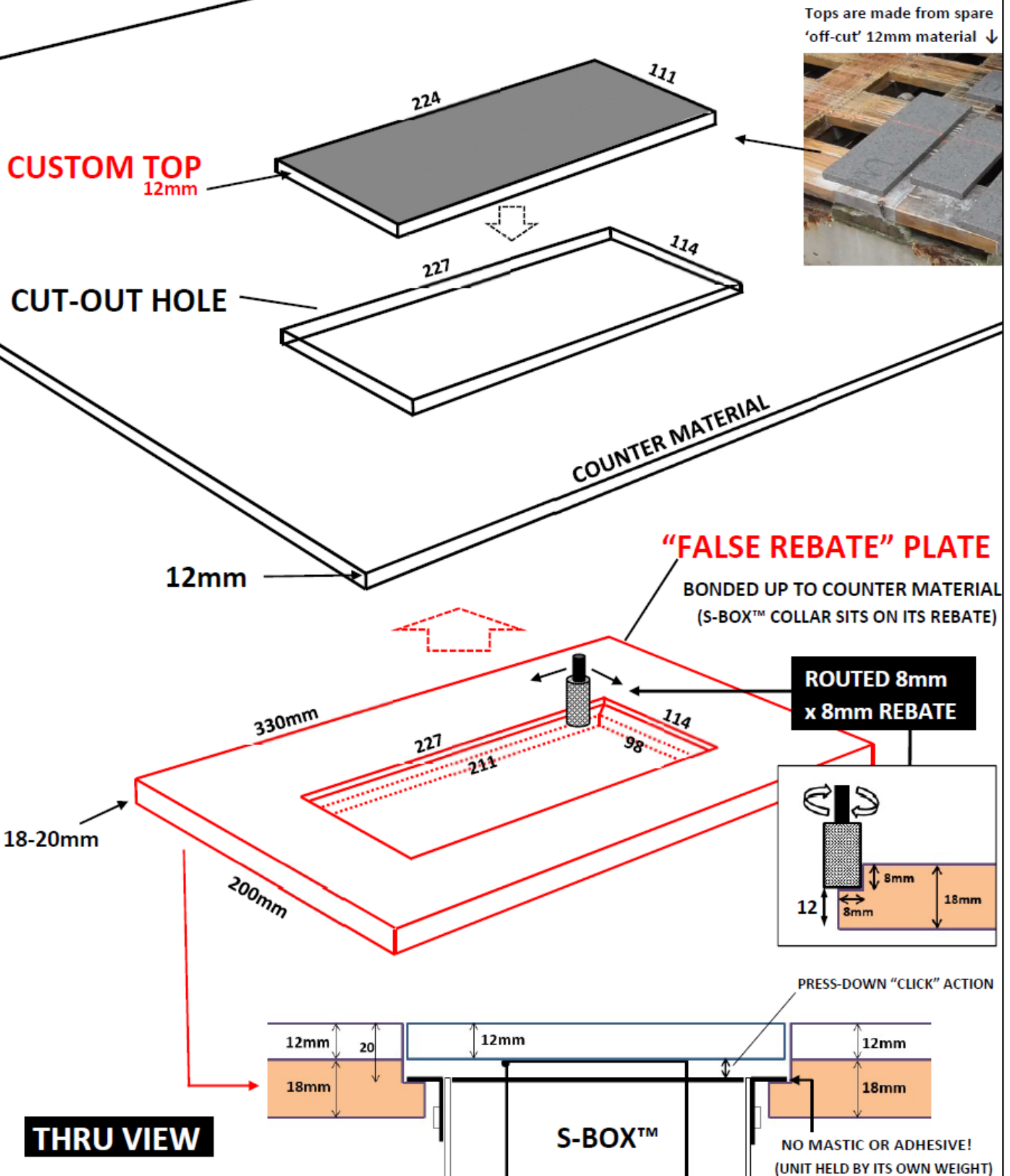
IF TOP MATERIAL IS 12mm THICKNESS, THE SLAVE MATERIAL SHOULD BE 18-20mm AND REQUIRES ITS OWN SHALLOW REBATE TO CREATE A TOTAL REBATE OF 20mm.

"FALSE REBATE" FOR INSTALLING AN S-BOX™ CHAMELEON UNIT IN 12mm COUNTER-TOP MATERIAL

2-PORT MINI

KEY DIMENSIONS

NB. THIS DIAGRAM DOES NOT SHOW RADIUS CORNERS FROM CUTTING PROCESS OR TOOLS, BECAUSE THEY CAN BE ANY RADIUS PREFERRED. (as long as custom top fits inside radius of Cut-hole)



"FALSE REBATE" FOR INSTALLING AN S-BOX™ CHAMELEON UNIT IN 12mm COUNTER-TOP MATERIAL

3-PORT

with or without USB

KEY DIMENSIONS

NB. THIS DIAGRAM DOES NOT SHOW RADIUS CORNERS FROM CUTTING PROCESS OR TOOLS, BECAUSE THEY CAN BE ANY RADIUS PREFERRED. (as long as custom top fits inside radius of Cut-hole)

Tops are made from spare 'off-cut' 12mm material ↓



CUSTOM TOP
12mm

CUT-OUT HOLE

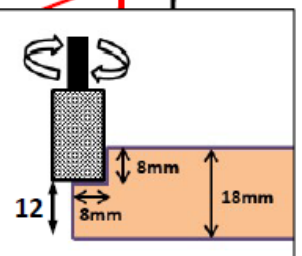
COUNTER MATERIAL

12mm

"FALSE REBATE" PLATE

BONDED UP TO COUNTER MATERIAL
(S-BOX™ COLLAR SITS ON ITS REBATE)

**ROUTED 8mm
x 8mm REBATE**



18-20mm

230mm

400mm

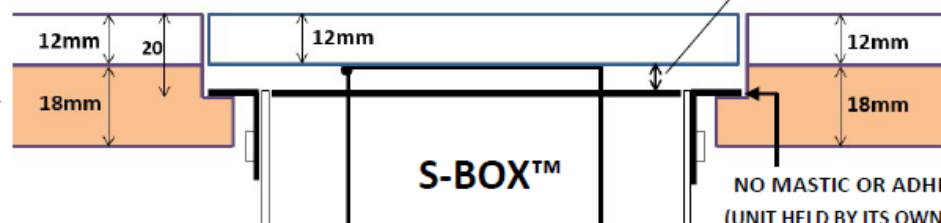
311

295

131

115

THRU VIEW



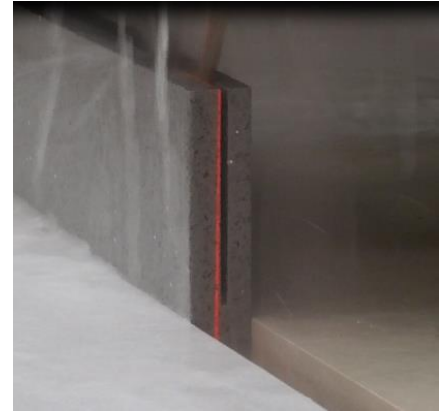
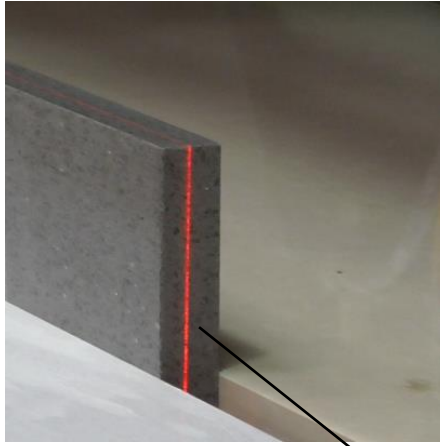
S-BOX™

NO MASTIC OR ADHESIVE!
(UNIT HELD BY ITS OWN WEIGHT)

THE CUSTOM TOP

THE S-BOX™ CUSTOM TOP IS MADE BY 'SLICING' AN OFF-CUT PIECE OF THE COUNTER MATERIAL . .

.. OR CAN BE MADE FROM 12mm MATCHING STOCK.



THE CIRCULAR SAW FOLLOWS A LASER LINE, AND CAREFULLY CUTS THE THICK MATERIAL DOWN INTO THE 12mm THICKNESS REQUIRED. THIS IS DONE IN A SERIES OF 8-10 PASSES TO ENSURE THE INTEGRITY OF THE STONE.

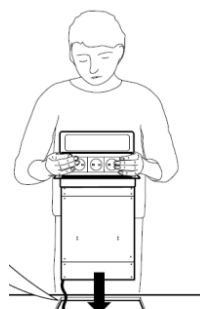
CROSS-CUTTING CREATES THE FINAL SIZES
.READY FOR THEIR CORNERS TO BE ROUNDED



THE CORNERS ARE TYPICALLY DONE BY HAND TO ENSURE THAT THE CUSTOM TOPS WILL NEATLY MARRY WITH THE INTERNAL RADIUS OF THE HOLES. THE EXPERIENCE AND SKILL OF THE WORKTOP SUPPLIER ENSURES THAT EVERYTHING WILL FIT BEAUTIFULLY ON SITE.



WITH HOLES AND TOPS NOW READY, THE COUNTERTOP CAN GO TO SITE . . .
FOR THE S-BOX™ UNIT TO BE INSTALLED! ☺



ON SITE

ALL S-BOX™ UNITS FEATURE A PATENTED & ADJUSTABLE “ZERO-ENERGY” LIFT SYSTEM

This is actually a counterbalance, operating in its own lift-shaft, and which is released to work by way of the catch. Based on the weight of the custom top material, and before the unit is installed into its rebate, this counterbalance will require subtraction or addition of weight for the individual unit to operate correctly.

To do this, place the Custom Top temporarily on top of the box

Then open the front plate as shown below: ↓

Info:

These fixings are
T20 star screws >



You can now add the required amount of extra weight into the weight tray, until you are happy with its pace of lift (ahead of the new top being added more permanently later). Refasten the door.



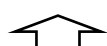
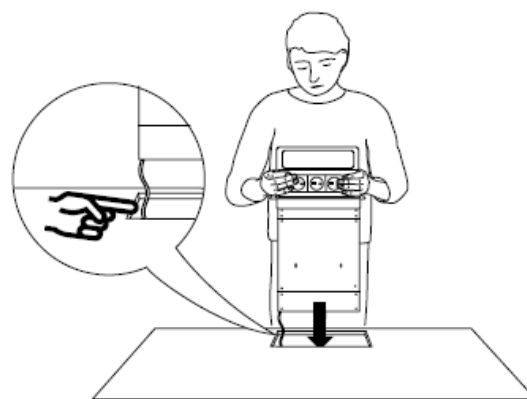
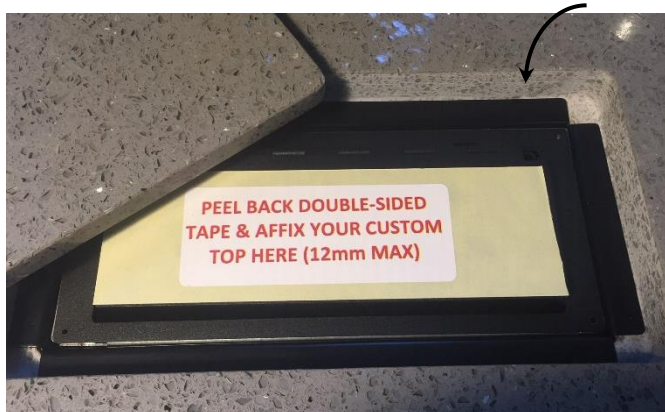
ADDITIONAL COUNTERWEIGHTS HAVE BEEN PROVIDED, SO THAT THE PARTICULAR DENSITY OF ANY 12mm “CUSTOM TOP” MATERIAL CAN BE OFFSET TO MAINTAIN THE UNIT’S SELF-LIFT.

AS A GUIDE ONLY:

12mm CORIAN® MATERIAL = 0-2 additional weights
12mm QUARTZ MATERIAL = 4-7 additional weights
12mm GRANITE MATERIAL = 6-10 additional weights

NB. If your Top is lightweight material (such as Timber) there are weight strips that can be removed from the weight tray instead.

You can now introduce the S-Box™ unit into its rebated hole.

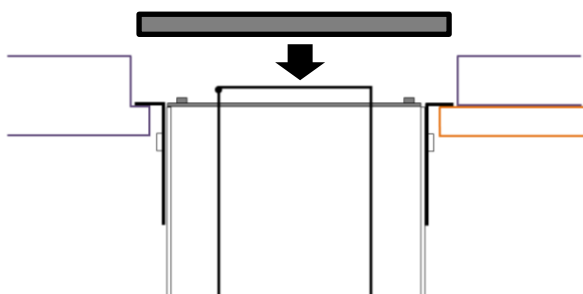


The black collar is perfectly OK on its own, and is deliberately designed to suit nil or very tight radius corners from the cutting process

As an option, specifically for fuller radius corners (8mm+), a drop-in cover plate is provided, to fill in the corner curves of the rebate.

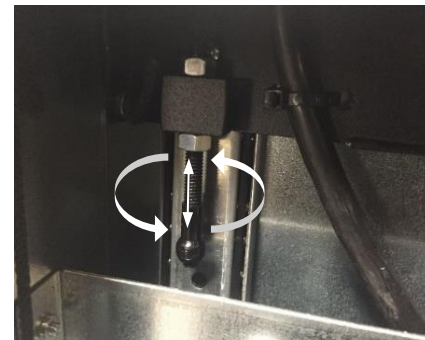
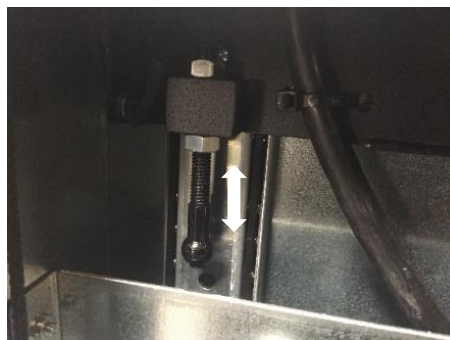


After ensuring that the Top is clean, dry and free from dust, peel back the tape and place the custom top into position. Press it firmly home. Allow 12hrs for adhesive to bond and cure.

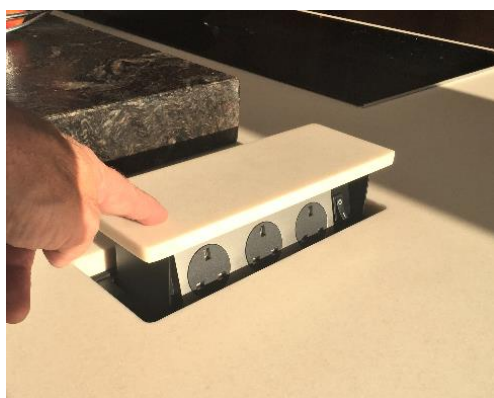


Any final “fine-tuning” of levels, if still required, can be achieved by adjusting the internal catch’s male ball position, so that in the closed (*catch-engaged*) position, the Custom Top and the adjacent surface are perfect and level.

By twisting the threaded ball part, and holding the top nut, the position of the ball can be raised or lowered by the tiniest of amounts. This can be found inside the base unit.



REMINDER: THE COMPLETED UNIT SHOULD NOT BE PERMANENTLY FIXED INTO ITS REBATE. ITS OWN WEIGHT WILL KEEP IT IN POSITION. THIS ENSURES THAT IN THE EVENT THAT THE UNIT NEEDS TO BE EXTRACTED FOR ANY REASON IT CAN BE LIFTED OUT THROUGHT THE SURFACE



Please Note: All electrical connections should be carried out by a fully Qualified Electrician

S-Box™ is a registered trademark of Cardinal IP Limited
The S-Box™ product innovation is protected by Patents - registered to Cardinal IP Limited

Cardinal Innovations Limited
Battye Street, Bradford
West Yorkshire, ENGLAND BD4 8AG
Tel: +44 (0)1274 386820 **Email:** sales@the-sbox.com
Web: www.the-sbox.com