

S-BOX
CHAMELEON™



2-PORT MINI

3-PORT with or without USB

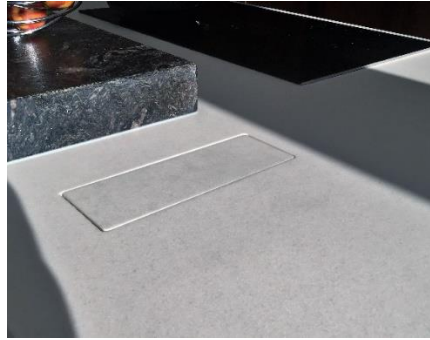
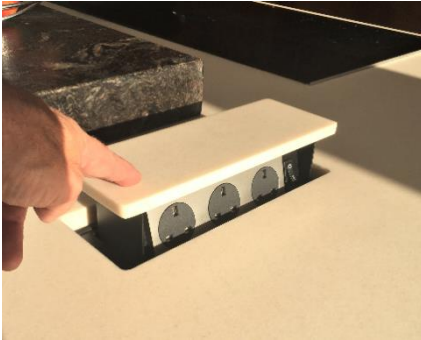
CUTTING INSTRUCTIONS AND INSTALLATION GUIDE



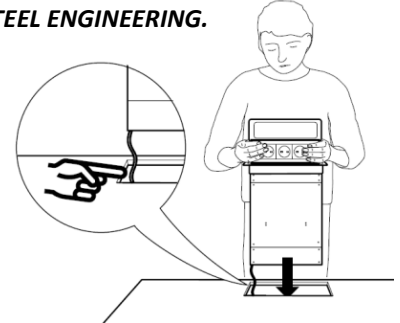
**WE RECOMMEND THAT ALL 'CUT-OUT' PROCESSES
AND/OR ANY 'CUSTOM TOP' FABRICATION SHOULD BE
DONE BY YOUR SPECIALIST WORKTOP PROVIDER**

The S-Box™ Chameleon Models are specifically designed for installation at exactly -20mm below surface - for an invisible and camouflaged location in the Counter.

This enables pop-up sockets to remain hidden from view until they are required!



All S-Box™ Chameleon units drop into position from above. No fixings required. They are SOLID STEEL ENGINEERING.



This method involves:

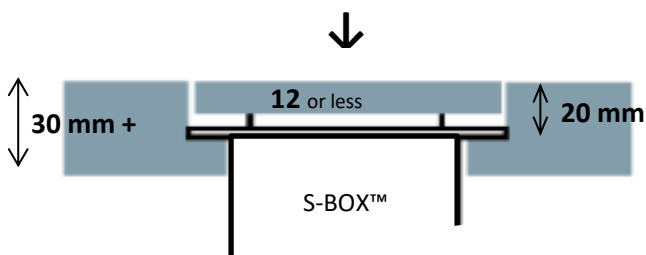
1. The installation of the main structure **at exactly 20mm below the Counter-top on a rebate**, so that the product can then receive its custom top – one that is therefore flush with, and matching with, its surroundings.
2. The creation of a Custom Top (**12mm maximum**) to place on the unit itself.

In worktop materials of **30mm** thickness and above, the installation is achieved by sitting the unit's collar on a **true rebate** cut **within** the material itself.

For materials of **20mm or 12mm** thickness, installation is achieved by sitting the unit's collar on a **"false" rebate**. This is created by using a second/slave material immediately below.

SEE THRU-VIEWS and EXAMPLES BELOW (NB. REBATE IS ALWAYS 20mm)

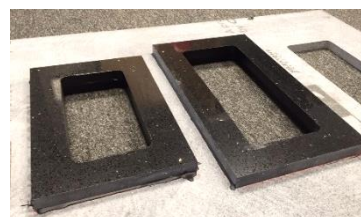
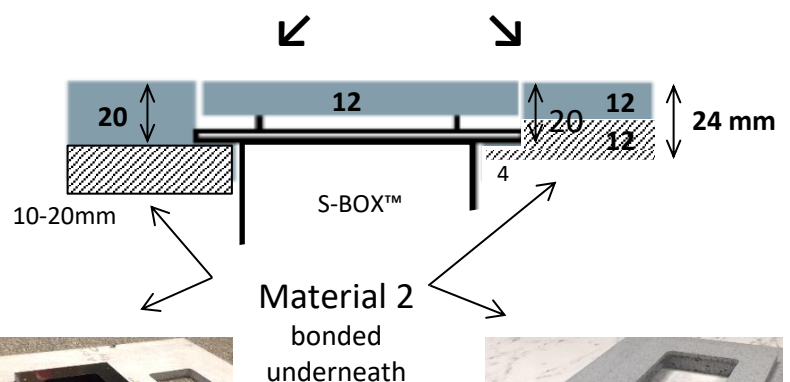
TRUE REBATE IN 30mm MATERIAL



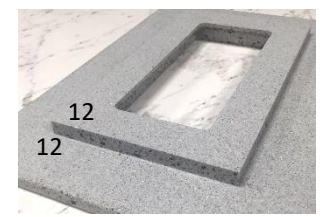
Rebate in 30mm GRANITE or QUARTZ



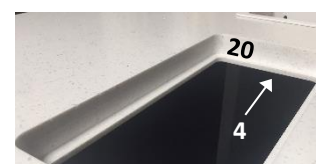
FALSE REBATE IN 20 or 12mm MATERIAL



False Rebate using 20mm QUARTZ



Rebate using 12 + 12mm CORIAN®



SO ANY S-BOX™ THAT IS TO BE INSTALLED IN THE HIDDEN “CHAMELEON” MODE, NEEDS THE INVOLVEMENT OF THE WORKTOP FABRICATOR AND HIS CUTTING TOOLS . . .



IN MATERIAL SUCH AS TIMBER, THIS CAN BE DONE BY HAND-TOOLS, BUT IN STONE MATERIAL (such as GRANITE/QUARTZ) AND IN MOST COMPOSITE MATERIALS, ALL PROCESSES ARE CARRIED OUT IN-FACTORY.

THIS IS THE SAME WAY THAT ANY STONE COUNTER IS PRE-CUT FOR THE SINK, THE TAPS, EXTRACTOR OR COOKER HOB.



THE CUTTING TOOLS (TYPICALLY CROSS-CUTTER and CNC ROUTER) ARE PROGRAMMED WITH THE DIMENSIONS REQUIRED.

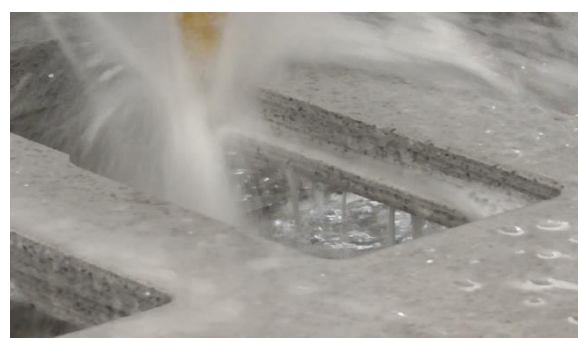


NB.
A ROUTER STARTS ITS CUTTING ROUTE FROM THE CENTRE POINT WHEN IT MACHINES OUT ANY HOLE.

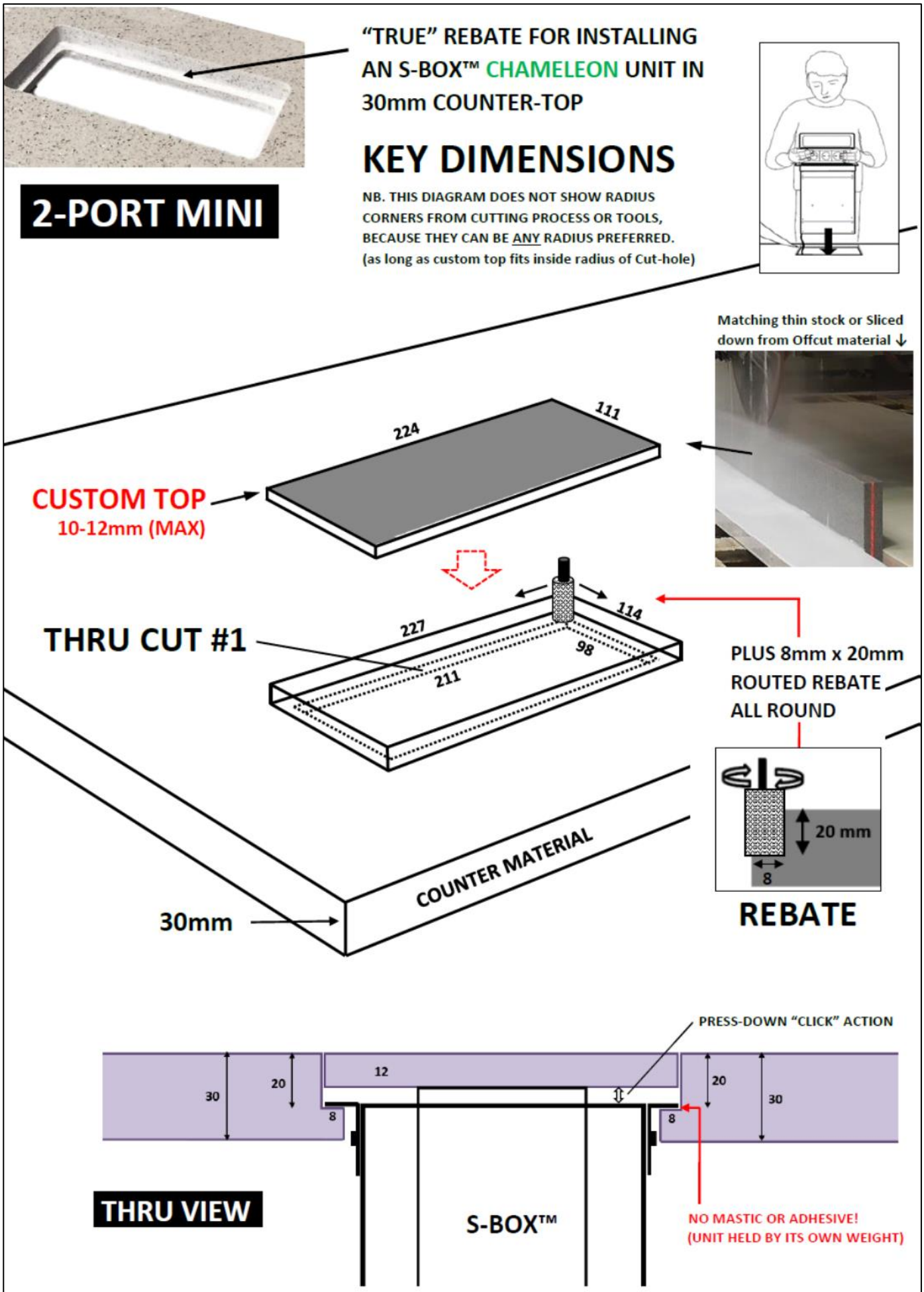


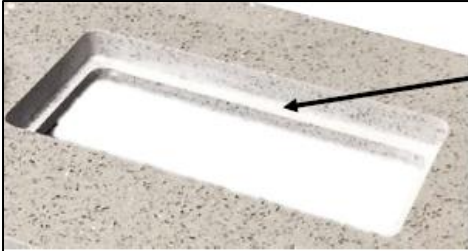
In 20mm material (or less) the hole will only be a full thru-cut one, with the rebate added later by using a second material underneath)

In the case of 30+mm material, machining will also include making the rebate for an S-Box™.



TO CREATE THE REBATE IN 30mm MATERIAL – THE ROUTER CARRIES OUT TWO PROCESSES:
THE FIRST IS A FULL THRU-CUT HOLE. THE SECOND IS TO GRIND OUT AN EXTRA 8mm, AT 20mm DEPTH.
THE CUSTOM TOP DIMENSIONS ARE 3mm SMALLER, TO PRODUCE A 1.5MM GAP TO ALL 4 SIDES.
(see 'custom top' process on page 10)





**"TRUE" REBATE FOR INSTALLING
AN S-BOX™ CHAMELEON UNIT IN
30mm COUNTER-TOP**

3-PORT

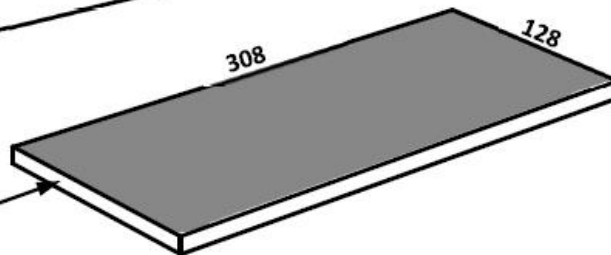
with or without USB

KEY DIMENSIONS

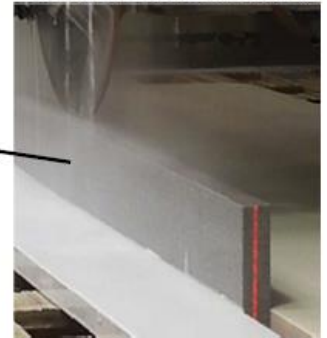
NB. THIS DIAGRAM DOES NOT SHOW RADIUS
CORNERS FROM CUTTING PROCESS OR TOOLS
BECAUSE THEY CAN BE ANY RADIUS PREFERRED.
(as long as custom top fits inside radius of Cut-hole)



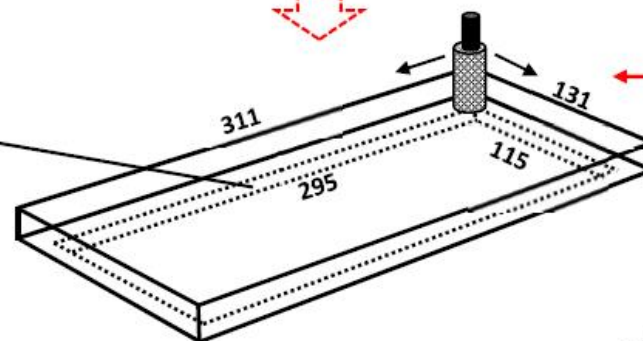
CUSTOM TOP
10-12mm (MAX)



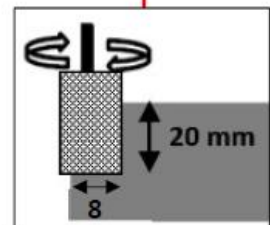
Matching thin stock or Sliced
down from Offcut material ↓



THRU CUT #1

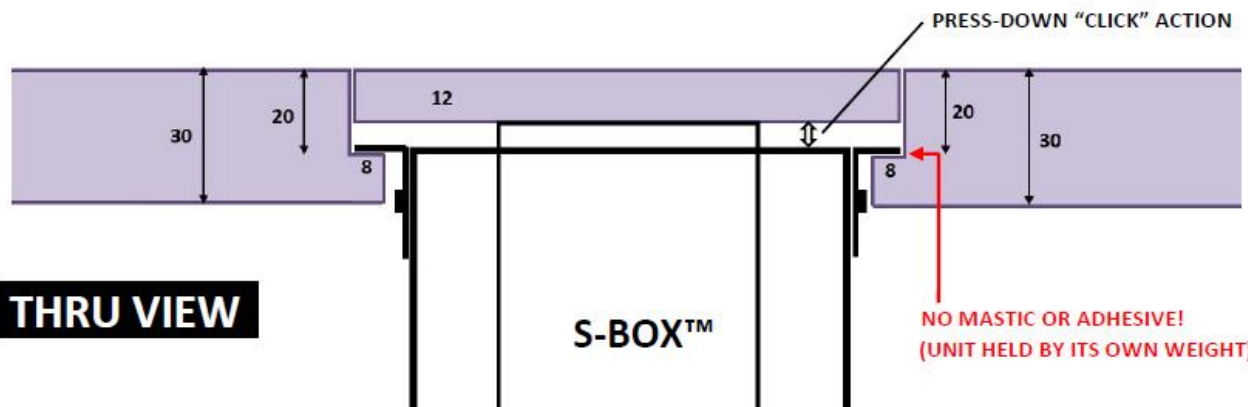


**ROUTED EXTRA
8mm ALL ROUND**



30mm

COUNTER MATERIAL

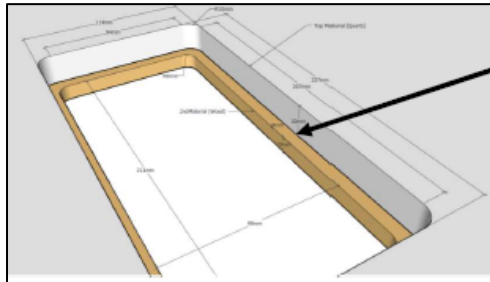


THRU VIEW

S-BOX™

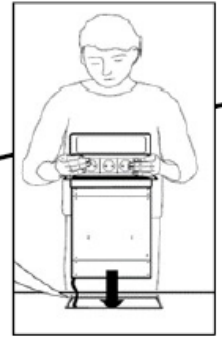
**NO MASTIC OR ADHESIVE!
(UNIT HELD BY ITS OWN WEIGHT)**

CREATING THE REBATE WITH 20mm MATERIAL REQUIRES THE USE OF A SECOND/"SLAVE" PLATE. THE DIFFERENCE BETWEEN THE UPPER HOLE DIMS, AND THOSE OF THE SLAVE, CREATES THE REBATE. CUSTOM TOP DIMENSIONS ARE 3mm SMALLER, TO PRODUCE A 1.5MM GAP TO ALL 4 SIDES.



"FALSE REBATE" FOR INSTALLING AN S-BOX™ CHAMELEON UNIT IN 20mm QUARTZ COUNTER-TOP.

NB. THIS DIAGRAM DOES NOT SHOW RADIUS CORNERS FROM CUTTING PROCESS OR TOOLS, BECAUSE THEY CAN BE ANY RADIUS PREFERRED. (as long as custom top fits inside radius of Cut-hole)



2-PORT MINI

KEY DIMENSIONS

CUSTOM TOP

CUT-OUT HOLE

10-12mm (MAX)

Sliced down from thicker material ↓



COUNTER MATERIAL

20mm

"FALSE REBATE" PLATE
BONDED UP TO COUNTER MATERIAL

12mm

(or any suitable off-cut material between 10-20mm)

330mm

211

98

200mm

PRESS-DOWN "CLICK" ACTION

20

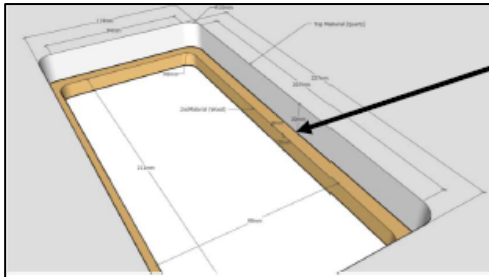
12

20

"FALSE" REBATE
CREATED BY #2 MATERIAL

THRU VIEW

S-BOX™



**"FALSE REBATE" FOR INSTALLING
AN S-BOX™ CHAMELEON UNIT IN
20mm QUARTZ COUNTER-TOP**

KEY DIMENSIONS

NB. THIS DIAGRAM DOES NOT SHOW RADIUS
CORNERS FROM CUTTING PROCESS OR TOOLS,
BECAUSE THEY CAN BE ANY RADIUS PREFERRED.
(as long as custom top fits inside radius of Cut-hole)



3-PORT

with or without USB

CUSTOM TOP

CUT-OUT HOLE

20mm

COUNTER MATERIAL

**"FALSE REBATE" PLATE
BONDED UP TO COUNTER MATERIAL**

10-12mm (MAX)

Sliced down from
thicker material ↓



12mm

(or any suitable
off-cut material
between 10-20mm)

400mm

295

115

230mm

PRESS-DOWN "CLICK" ACTION

20

12

20

**"FALSE" REBATE
CREATED BY #2 MATERIAL**

THRU VIEW

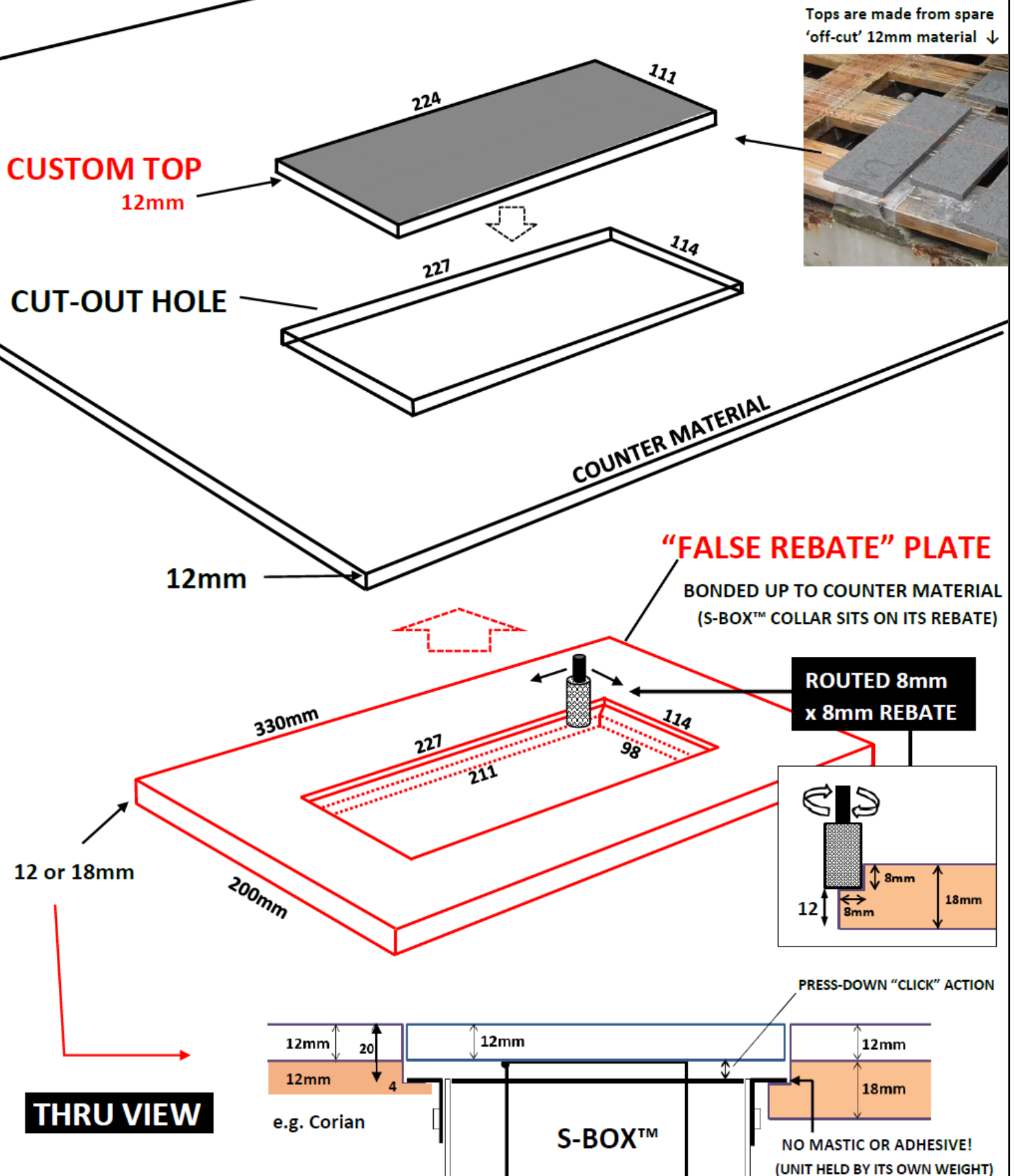
S-BOX™

"FALSE REBATE" FOR INSTALLING AN S-BOX™ CHAMELEON UNIT IN 12mm COUNTER-TOP MATERIAL

2-PORT MINI

KEY DIMENSIONS

NB. THIS DIAGRAM DOES NOT SHOW RADIUS CORNERS FROM CUTTING PROCESS OR TOOLS, BECAUSE THEY CAN BE ANY RADIUS PREFERRED. (as long as custom top fits inside radius of Cut-hole)



"FALSE REBATE" FOR INSTALLING AN S-BOX™ CHAMELEON UNIT IN 12mm COUNTER-TOP MATERIAL

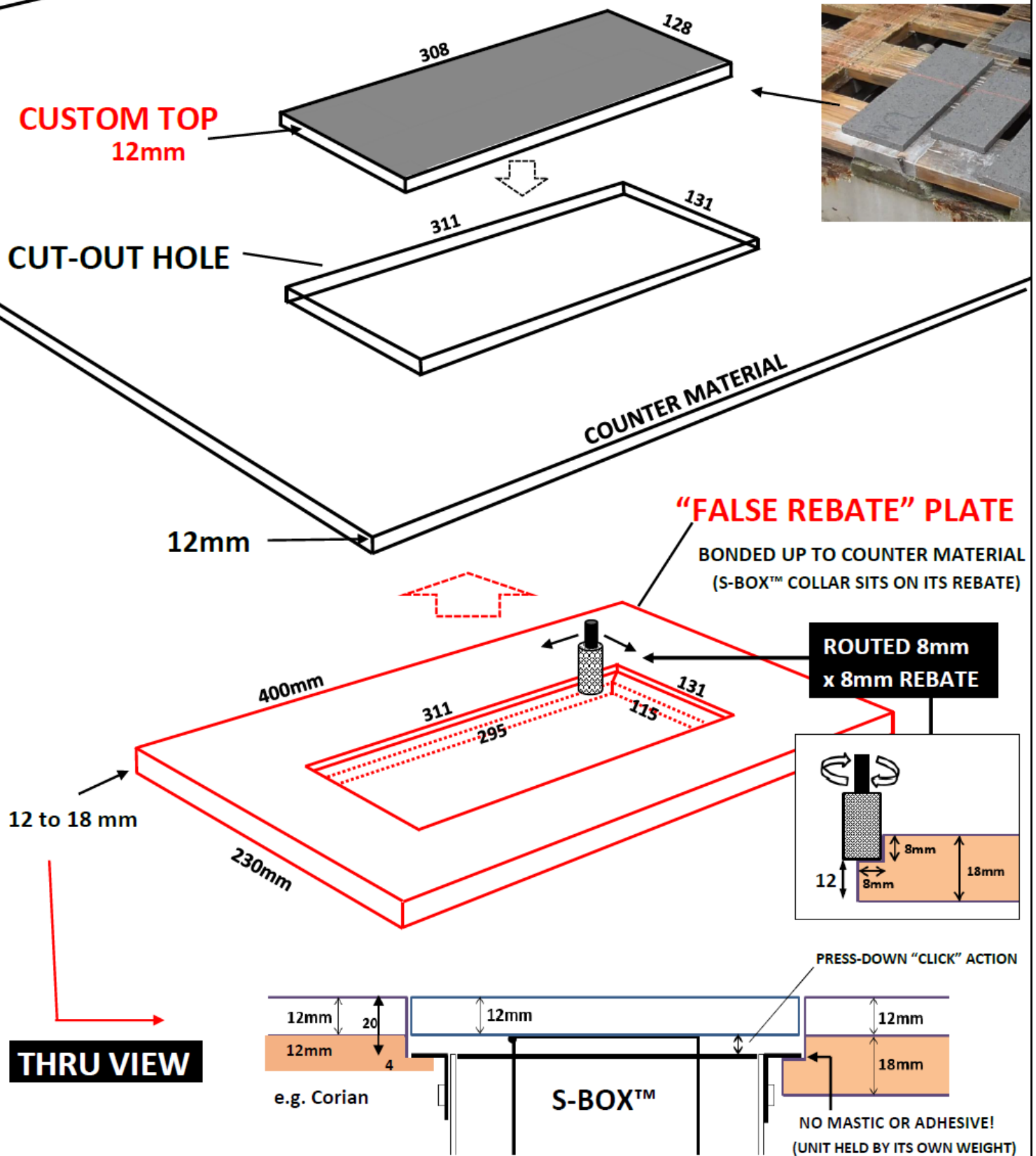
3-PORT

with or without USB

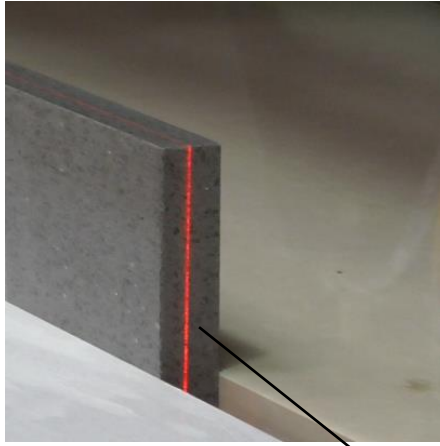
KEY DIMENSIONS

NB. THIS DIAGRAM DOES NOT SHOW RADIUS CORNERS FROM CUTTING PROCESS OR TOOLS, BECAUSE THEY CAN BE ANY RADIUS PREFERRED. (as long as custom top fits inside radius of Cut-hole)

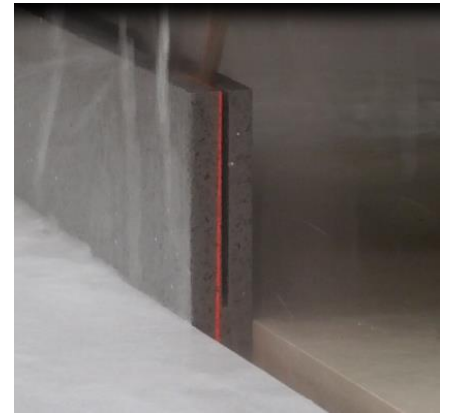
Tops are made from spare 'off-cut' 12mm material ↓



THE CUSTOM TOP



THE 12mm (maximum) S-BOX™ CUSTOM TOP IS MADE BY 'SLICING' AN OFF-CUT PIECE OF THE COUNTER MATERIAL . . . OR CAN BE MADE FROM 12mm MATCHING STOCK.



THE CIRCULAR SAW FOLLOWS A LASER LINE, AND CAREFULLY CUTS THE THICK MATERIAL DOWN INTO THE 12mm THICKNESS REQUIRED. THIS IS DONE IN A SERIES OF 8-10 PASSES TO ENSURE THE INTEGRITY OF THE STONE.

CROSS-CUTTING CREATES THE FINAL SIZES READY FOR THEIR CORNERS TO BE ROUNDED

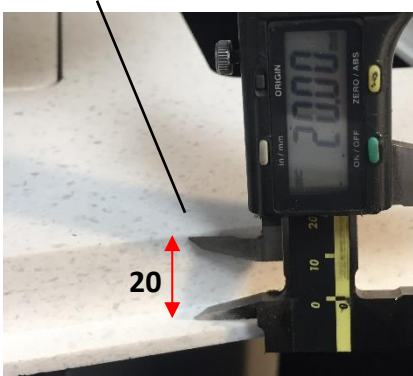


THE CORNERS ARE TYPICALLY DONE BY HAND TO ENSURE THAT THE CUSTOM TOPS WILL NEATLY MARRY WITH THE INTERNAL RADIUS OF THE HOLES. THE EXPERIENCE AND SKILL OF THE WORKTOP SUPPLIER ENSURES THAT EVERYTHING WILL FIT BEAUTIFULLY ON SITE.

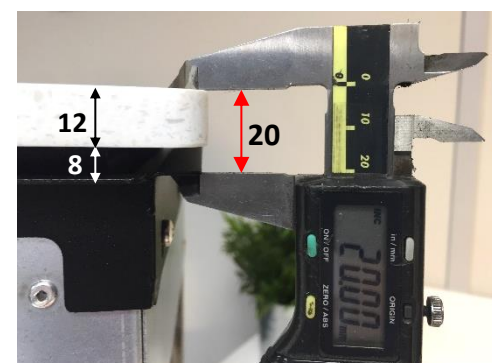


WITH 20mm REBATE HOLE AND TOP NOW READY, THE COUNTERTOP CAN GO TO SITE FOR THE S-BOX™ UNIT TO BE INSTALLED! 😊

THE 20mm REBATE



THE S-BOX™ COLLAR IS ADJUSTABLE TO ENSURE THAT THE UNIT (AND ITS TOP) FIT INTO THE 20mm REBATE



Please set this (if necessary) before installation

ON SITE LIFT-ADJUSTMENT

ALL S-BOX™ UNITS FEATURE A PATENTED & ADJUSTABLE “ZERO-ENERGY” LIFT SYSTEM

This is actually a counterbalance, operating in its own lift-shaft, and which is released to work by way of the catch. Based on the weight of the custom top material, and before the unit is installed into its rebate, this counterbalance will require subtraction or addition of weight for the individual unit to operate correctly.

To do this, place the Custom Top temporarily on top of the box

Then open the front plate as shown below: ↓

Info:

These fixings are
T20 star screws >



You can now add the required amount of extra weight into the weight tray, until you are happy with its pace of lift (ahead of the new top being added more permanently later). Refasten the door.



A PACK OF COUNTERWEIGHTS HAS BEEN PROVIDED, SO THAT THE DENSITY OF ANY 12mm “CUSTOM TOP” MATERIAL CAN BE OFFSET TO ESTABLISH THE UNIT’S SELF-LIFT.

PLEASE ADD WEIGHTS AS FOLLOWS:

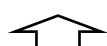
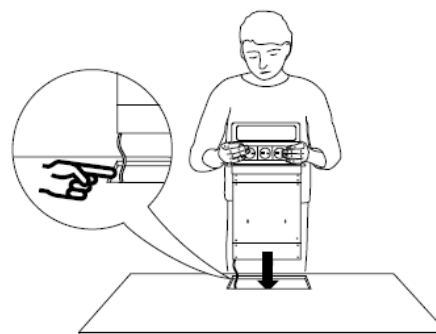
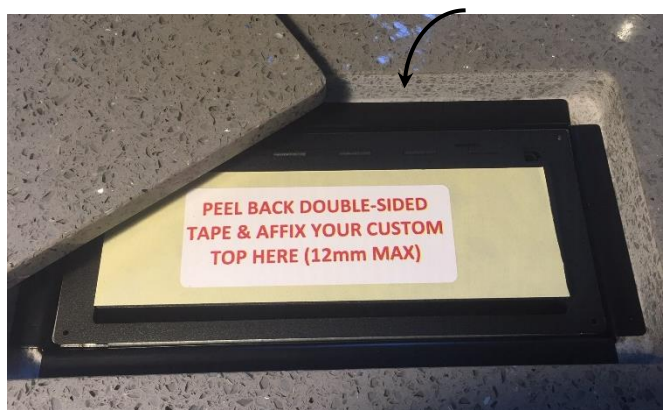
12mm CORIAN® - Add 0-2 additional weights

12mm QUARTZ - Add 4-8 additional weights

12mm GRANITE - Add 6-10 additional weights

NB. If your Top is lightweight material (such as Timber) there are weight strips that can be removed from the weight tray instead.

You can now introduce the S-Box™ unit into its rebated hole.

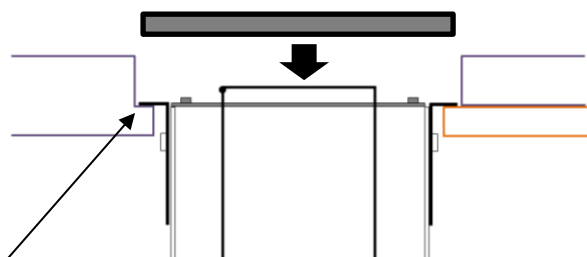


The black collar is perfectly OK on its own, and is deliberately designed to suit nil or very tight radius corners from the cutting process

As an option, specifically for fuller radius corners (8mm+), a drop-in cover plate is provided, to fill in the corner curves of the rebate.



After ensuring that the Top is clean, dry and free from dust, peel back the tape and place the custom top into position. Press it firmly home. Allow 12hrs for adhesive to bond and cure.



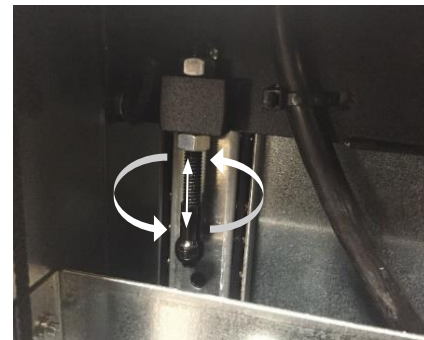
FOR STONE (GRANITE and QUARTZ) MATERIAL PLEASE ADD 3-4 OF SPOTS OF MASTIC FOR EXTRA ADHESION



*** DO NOT USE ANY MASTIC OR ADHESIVE HERE.**
UNIT MUST BE REMOVEABLE IF REQUIRED.
IT USES ITS OWN WEIGHT FOR STABILITY.

Any final "fine-tuning" of levels, if still required, can be achieved by adjusting the internal catch's male ball position, so that in the closed (*catch-engaged*) position, the Custom Top and the adjacent surface are perfect and level.

By twisting the threaded ball part, and holding the top nut, the position of the ball can be raised or lowered by the tiniest of amounts. This can be found inside the base unit.



REMINDER: THE COMPLETED UNIT SHOULD NOT BE PERMANENTLY FIXED INTO ITS REBATE. ITS OWN WEIGHT WILL KEEP IT IN POSITION. THIS ENSURES THAT IN THE EVENT THAT THE UNIT NEEDS TO BE EXTRACTED FOR ANY REASON IT CAN BE LIFTED OUT THROUGHT THE SURFACE



Please Note: All electrical connections should be carried out by a fully Qualified Electrician

S-Box™ is a registered trademark of Cardinal IP Limited
 The S-Box™ product innovation is protected by Patents - registered to Cardinal IP Limited

Cardinal Innovations Limited

Battye Street, Bradford

West Yorkshire, ENGLAND BD4 8AG

Tel: +44 (0)1274 386820 **Email:** sales@the-sbox.com

Web: www.the-sbox.com